

Product Data Sheet

Seplife® RP LX-21SS-3

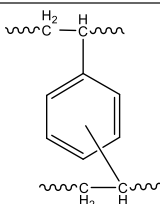
1. Description

Seplife®RP LX-21SS-3 is a polydivinylbenzene macroporous resin for Reversed-Phase Chromatography (RPC) and Adsorption. The wide pore polymer matrix provides excellent kinetics and capacity for small biomolecules at both preparative and process scale.

ADVANTAGES

- Highly hydrophobic
- High chemical stability
- Easy column packing
- Efficient regeneration

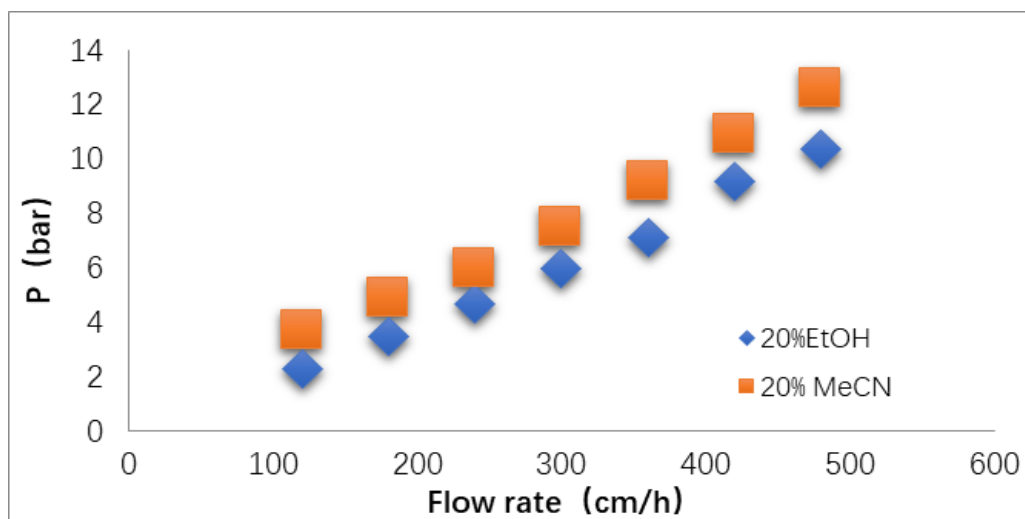
2. Properties

Grade Names	LX-21SS-3(S)	LX-21SS-3(M)	LX-21SS-3(L)
Polymer matrix			
Appearance	White Spherical Beads		
Functional Group	NONE		
Particle Size (um)	30-50	50-100	100-300
Uniformity Coefficient	≤1.3		
Wet Apparent Density (g/mL)	0.83-0.93	0.76-0.87	0.70-0.80
Pressure resistance (bar)	30	30	20
pH Limits, Stability	1-14		
Pore Volume (mL/g)	1.30±0.10		
Specific Surface Area (m ² /g)	850±100		
Pore Radius (Å)	300±30		
Swelling coefficient (From wet form)	≤3% (100%MeOH)	≤5% (100%MeOH)	≤5% (100%MeOH)
	≤5 % (100% MeCN)	≤6% (100% MeCN)	≤7% (100% MeCN)
Operating Temperature (°C)	4-130		
Shipped as	Shipped in 20% ethanol slurry for the S and M, shipped in wet form for the L grade		
Expiry date	5 years		

Production date: See label

3. Hydraulic Characteristics

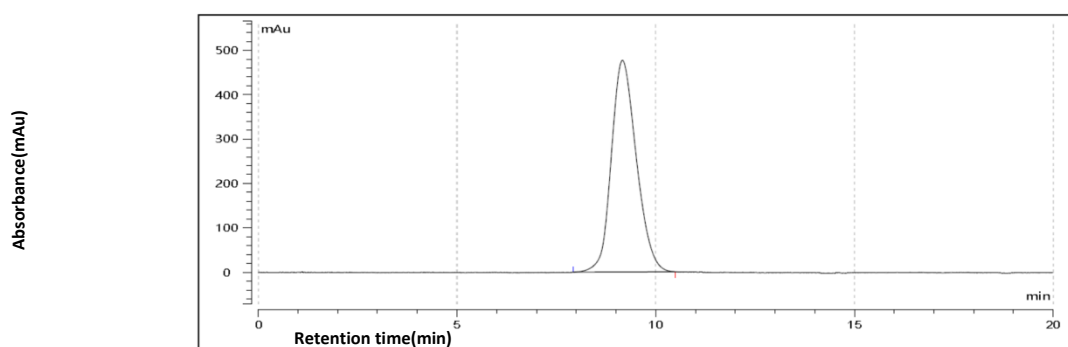
The approximate pressure drop at various solutions and flow rates for Seplife® RP LX-21SS-3(M) in normal down flow operation is shown in the graph below.



10*600mm column, Packing pressure : 8bar

Fig.1 Pressure Drop of Seplife® RP LX-21SS-3(M)

The elution profile of Seplife® RP LX-21SS-3(M) is shown in the graph below.



10*600mm column

20% EtOH 4-6CV, 6cm/min

Inject 1ml (0.1ml Actone+0.9ml 20%EtOH)

UV: 280nm

20% EtOH, 2CV, 6cm/min

Fig 2. The elution curve for column efficiency testing of Seplife® RP LX-21SS-3(M)

4. Indicative Applications

- Purification of small peptides, oligonucleotides and proteins
- Adsorption of vitamins, antibiotics, enzymes, steroids and other substance from fermentation solutions
- Decolorization of various sugar solutions
- Adsorption of fatty acids
- Adsorption of various perfume
- Decolorization and purification of various chemicals

5. Storage

Shipped in 20% ethanol slurry for the S and M grades, shipped in wet form for the L grade.

6. Transportation

Avoid sunlight, rain, and heavy pressure during transportation. It is strictly forbidden to transport toxic and hazardous materials.

All information set forth herein is for informational purposes only. This information is general descriptive(introductory) information of SUNRESIN and its related products, technologies and services. Neither shall constitute the guarantee of SUNRESIN and its affiliates to products, technologies and services in specific fields and specific application conditions results, unless otherwise expressly noted. SUNRESIN and its affiliates assumes no obligation or liability for the information in this document. Customer is responsible for judging whether the information is appropriate for Customer's concrete demand and are obliged to understand whether the use of these products, technologies and services is permitted by the laws and regulations of their countries and relevant regions. Unless expressly stated, no freedom from infringement of use any patent or trademark or intellectual property rights owned by SUNRESIN or its affiliated companies under this document is to be inferred.