

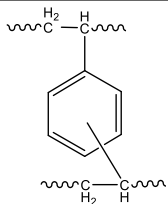
**1. Description**

Seplife® RP LX-16SS-3 is a polystyrene/divinylbenzene macroporous adsorbent resin characterized by high hydrophobicity and controlled pore structure. It is particularly suitable for reversed-phase chromatography (RPC) and adsorption. The controlled pore structure provides excellent kinetics and capacity for small biomolecules at both preparative and process scale.

**ADVANTAGES**

- Highly hydrophobic
- High chemical stability
- Easy column packing
- Efficient regeneration

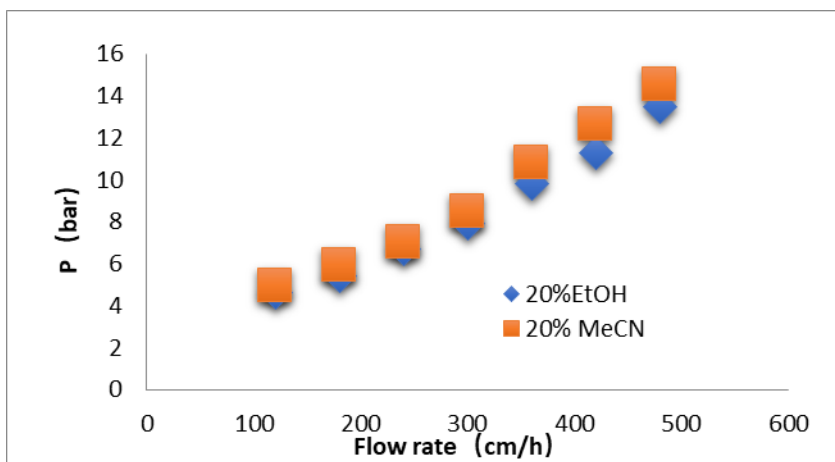
**2. Properties**

Grade Names	LX-16SS-3 (S)	LX-16SS-3 (M)	LX-16SS-3 (L)
<b>Polymer matrix</b>			
<b>Appearance</b>	White Spherical Beads		
<b>Functional Group</b>	None		
<b>Particle Size (um)</b>	30-50	50-100	100-300
<b>Uniformity Coefficient</b>	≤1.3		
<b>Bulk Density (g/mL)</b>	0.83-0.93	0.76-0.87	0.70-0.80
<b>Max pressure resistance (bar)</b>	30	30	20
<b>pH Limits, Stability</b>	1-14		
<b>Pore Volume (mL/g)</b>	1.30±0.10		
<b>Specific Surface Area (m²/g)</b>	1000±100		
<b>Pore Radius (Å)</b>	150±30		
<b>Swelling coefficient (From wet in water)</b>	≤6% (100%MeOH)	≤7% (100%MeOH)	≤7% (100%MeOH)
	≤9 % (100% MeCN)	≤10% (100% MeCN)	≤10% (100% MeCN)
<b>Operating Temperature (°C)</b>	4-130		
<b>Shipped as</b>	Shipped in 20% ethanol slurry for the S and M grades, shipped in wet form for the L grade		
<b>Expiry date</b>	5 years		

Production date: See label

**3. Hydraulic Characteristics**

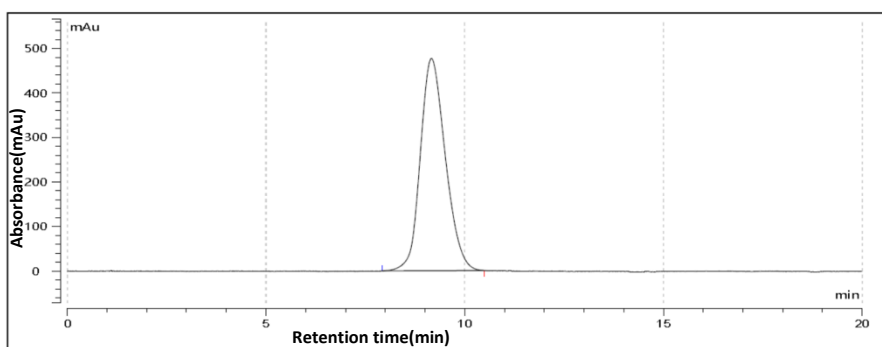
The approximate pressure drop at various solutions and flow rates for Seplife® RP LX-16SS(M) in normal down flow operation is shown in the graph below.



10\*600mm column, Packing pressure: 8bar

Fig 1. Pressure Drop of Seplife® RP LX-16SS-3(M)

The elution profile of Seplife® RP LX-16SS-3(M) is shown in the graph below.



10\*600 mm column

20% EtOH 4-6CV, 6cm/min

Inject 1ml (0.1ml Actone + 0.9ml 20% EtOH)

UV : 280nm

20% EtOH, 2CV, 6cm/min

Fig 2. Elution curve for column efficiency testing of Seplife® RP LX-16SS-3(M)

#### 4. Indicative Applications

Purification of small molecules such as iodine contrast agents, polyphenols, flavonoids, and saponins

#### 5. Shipping

Shipped in 20% ethanol slurry for the S and M grades, shipped in wet form for the L grade.

#### 6. Transportation

Avoid sunlight, rain, and heavy pressure during transportation. Do not transport in combination with toxic and hazardous materials.

All information set forth herein is for informational purposes only. This information is general descriptive(introductory) information of SUNRESIN and its related products, technologies and services. Neither shall constitute the guarantee of SUNRESIN and its affiliates to products, technologies and services in specific fields and specific application conditions results, unless otherwise expressly noted. SUNRESIN and its affiliates assumes no obligation or liability for the information in this document. Customer is responsible for judging whether the information is appropriate for Customer's concrete demand and are obliged to understand whether the use of these products, technologies and services is permitted by the laws and regulations of their countries and relevant regions. Unless expressly stated, no freedom from infringement of use any patent or trademark or intellectual property rights owned by SUNRESIN or its affiliated companies under this document is to be inferred.